

Change to SB121 Family C Pin

Description

The C-pin on all cranes of the SB121 family of sidelifter models has been changed in order to increase the clearance between the pin head and the gland of the bottom lift cylinder when stowed.

Models and Markets

SB121, SB122 models in all markets will be affected when the change is fully implemented.
First used on serial number SB8703

Bills of Material

Spare Parts:

C-Pin PN-32540 has been replaced by PN-39219

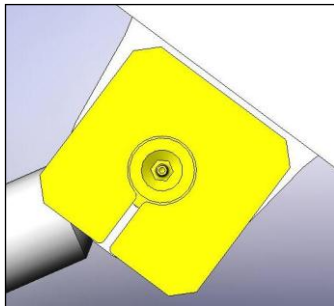
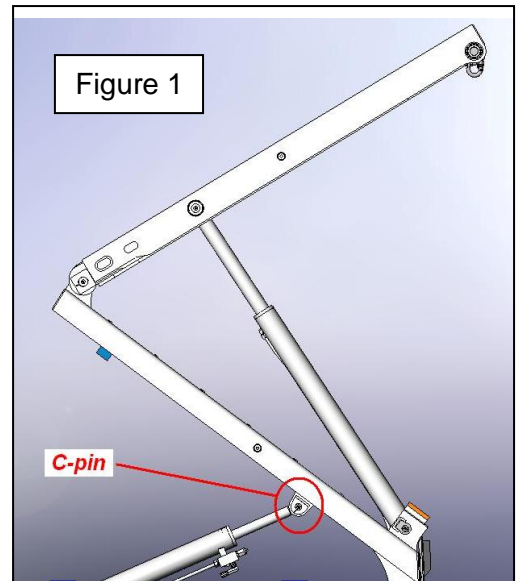


Figure 2 - Old pin PN-32540

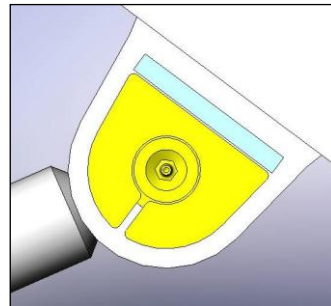


Figure 3 – New Pin PN-39219

Backward Compatibility

The old and new versions of the pin are not directly interchangeable although both can be used with a minor modification: See Use Instructions

Use Instructions

The new pin design is located by a 10mm square mild steel bar (shown blue in figure 3) which has been added to the c-pin lug. If an old pin is used with a new bottom arm the square retainer bar will have to be removed or the pin head has to be cut down as shown in figure 4. If a new pin is fitted to an old bottom arm then a retaining bar will have to be welded to the lug as shown in figure 5.

Change to SB121 Family C Pin

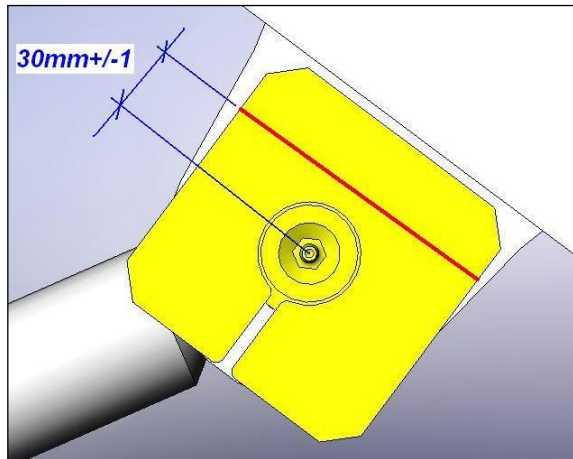


Figure 4 – Modify old pin for use with new bottom arm

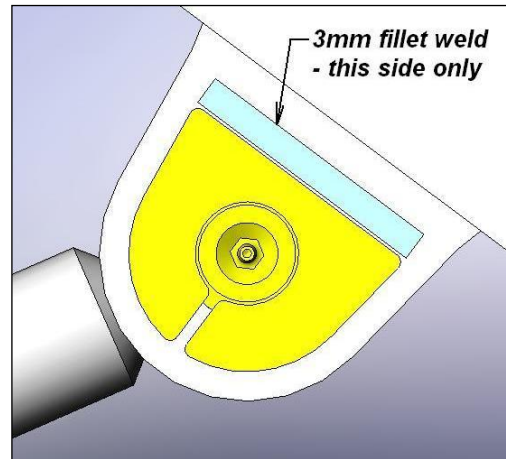


Figure 5 – Modify old bottom arm for use with new C-pin

Benefits and Advantages to Change

-

References

NC-00189